

2-Port 10/100/1000T 802.3bt PoE + 6-Port 10/100/1000T 802.3at PoE + 2-Port 100/1000X SFP Managed Switch



A New Generation IEEE 802.3bt PoE++ Managed Switch with Advanced L2/L4 Switching and Security

PLANET GS-4210-8HP2S is a cost-optimized, 1U, Gigabit **IEEE 802.3bt PoE++** Managed Switch featuring PLANET **intelligent PoE** functions to improve the availability of critical business applications. It provides IPv6/IPv4 dual stack management and built-in L2/L4 Gigabit switching engine along with **2 10/100/1000BASE-T** ports featuring **95-watt 802.3bt PoE++**, **6 10/100/1000BASE-T** ports featuring **36-watt 802.3at PoE+** and **2 100/1000BASE-X SFP ports**. With a total power budget of up to 240 watts for different kinds of PoE applications, the GS-4210-8HP2S provides a quick, safe and cost-effective 802.3bt PoE++ network solution for small businesses and enterprises.



IEEE 802.3bt PoE++ Solutions

The GS-4210-8HP2S supports the 802.3bt standard, supplying up to 95 watts per 802.3bt port for increased requirements of devices. It can offer more PoE applications, such as:

- PoE PTZ speed dome cameras
- Any network device that needs higher PoE power to work normally
- Thin-client
- AIO (All-in-One) touch PC
- Remote digital signage display

Physical Port

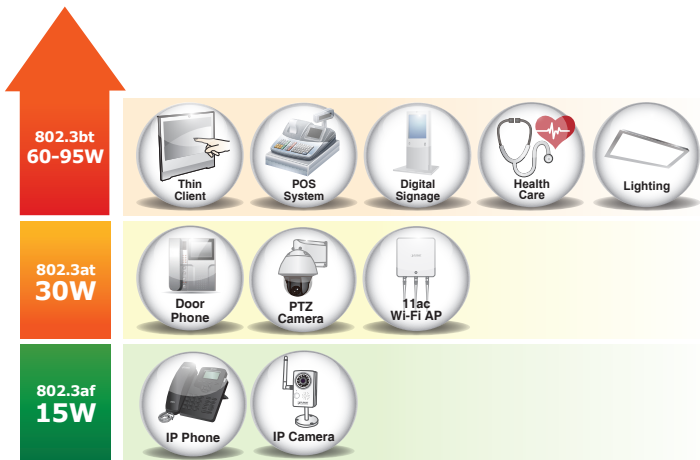
- **8-port 10/100/1000BASE-T** RJ45 copper with **PoE** injector function
- **2 100/1000BASE-X mini-GBIC/SFP** slots
- RJ45 console interface for switch basic management and setup

Power over Ethernet

- Complies with IEEE 802.3bt PoE++ and 802.3at PoE+ standard PSE
- Backward compatible with IEEE 802.3af Power over Ethernet
- Selectable PoE mode: End-span/Mid-span/802.3bt/UPoE/Legacy
- Ports 1 to 6 support up to 36 watts
- Ports 7 to 8 support up to 95 watts
- Each PoE port supports 54V DC power to powered device
- 240-watt PoE budget
- Auto detects powered device
- Circuit protection prevents power interference between ports
- Remote power feeding up to 100 meters in standard mode and 250m in extended mode
- PoE management
 - Total PoE power budget control
 - Per port PoE function enable/disable
 - PoE port power feeding priority
 - Per PoE port power limitation
 - PD classification detection
 - PoE extension
- Intelligent PoE features
 - PD alive check
 - PoE schedule
 - Scheduled power recycling

Layer 2 Features

- Prevents packet loss with back pressure (half-duplex) and IEEE 802.3x pause frame flow control (full-duplex)
- High performance Store and Forward architecture, broadcast storm control, and runt/CRC filtering that



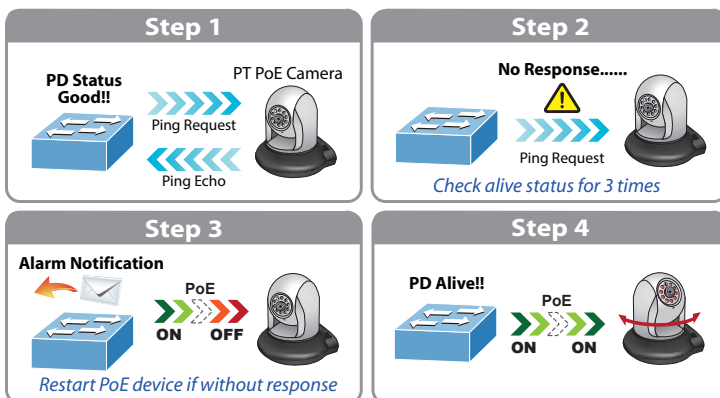
Built-in Unique PoE Functions for Powered Devices Management

Being the managed PoE switches for surveillance, wireless and VoIP networks, the GS-4210-8HP2S features the following special PoE management functions:

- PD alive check
- Scheduled power recycling
- PoE schedule
- PoE usage monitoring
- PoE extension

Intelligent Powered Device Alive Check

The GS-4210-8HP2S can be configured to monitor connected PD (Powered Device) status in real time via ping action. Once the PD stops working and responding, the GS-4210-8HP2S will resume the PoE port power and bring the PD back to work. It will greatly enhance the network reliability through the PoE port resetting the PD's power source and reducing administrator management burden.



Scheduled Power Recycling

The GS-4210-8HP2S allows each of the connected PoE IP cameras or PoE wireless access points to reboot at a specified time each week. Therefore, it will reduce the chance of IP camera or AP crash resulting from buffer overflow.

eliminates erroneous packets to optimize the network bandwidth

- Supports **VLAN**
 - IEEE 802.1Q tagged VLAN
 - Provider Bridging (VLAN Q-in-Q) support (IEEE 802.1ad)
 - Protocol VLAN
 - Voice VLAN
 - Private VLAN
 - Management VLAN
 - GVRP
- Supports **Spanning Tree Protocol**
 - STP (Spanning Tree Protocol)
 - RSTP (Rapid Spanning Tree Protocol)
 - MSTP (Multiple Spanning Tree Protocol)
 - STP BPDU Guard, BPDU filtering and BPDU forwarding
- Supports **Link Aggregation**
 - IEEE 802.3ad Link Aggregation Control Protocol (LACP)
 - Cisco ether-channel (static trunk)
- Provides port mirror (many-to-1)
- Loop protection to avoid broadcast loops

Quality of Service

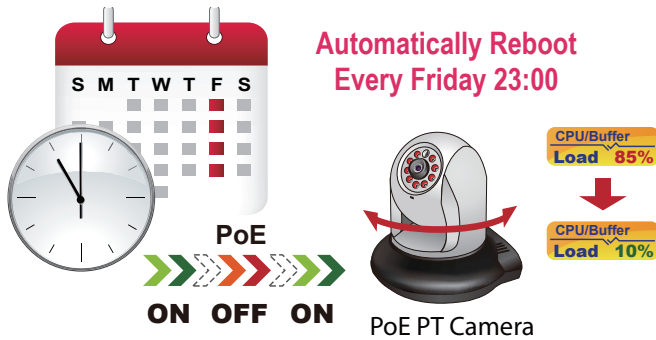
- Ingress and egress rate limit per port bandwidth control
- Storm control support
 - Broadcast/Unknown unicast/Unknown multicast
- Traffic classification
 - IEEE 802.1p CoS
 - TOS/DSCP/IP precedence of IPv4/IPv6 packets
- Strict priority and Weighted Round Robin (WRR) CoS policies

Multicast

- Supports IPv4 IGMP snooping v2 and v3
- Supports IPv6 MLD snooping v1, v2
- IGMP querier mode support
- IGMP snooping port filtering
- MLD snooping port filtering

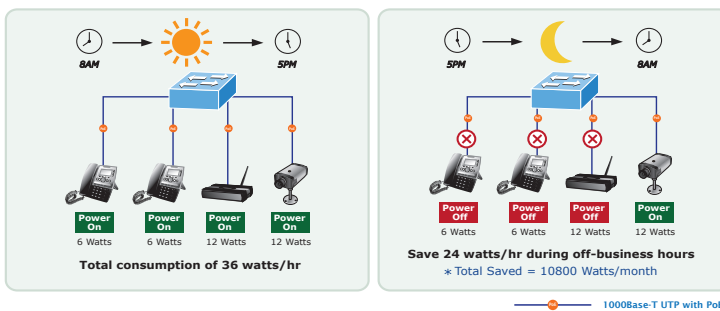
Security

- Authentication
 - IEEE 802.1X port-based network access authentication
 - Built-in RADIUS client to cooperate with the RADIUS servers
 - RADIUS/TACACS+ login user access authentication



PoE Schedule for Energy Saving

Under the trend of energy saving worldwide and contributing to environmental protection, the GS-4210-8HP2S can effectively control the power supply besides its capability of giving high watts power. The “PoE schedule” function helps you to enable or disable PoE power feeding for each PoE port during specified time intervals and it is a powerful function to help SMBs or Enterprises save power and money. It also increases security by powering off PDs that should not be in use during non-business hours.

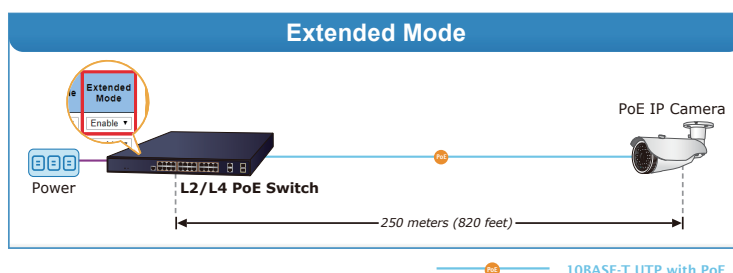


PoE Usage Monitoring

Via the power usage chart in the web management interface, the GS-4210-8HP2S enables the administrator to monitor the status of the power usage of the connected PDs in real time. Thus, it greatly enhances the management efficiency of the facilities.

PoE Power and Ethernet Data Transmission Distance Extension

In the “Extend” operation mode, the GS-4210-8HP2S operates on a per-port basis at 10Mbps duplex operation but can support 23- or 85-watt PoE power output correspondingly over a distance of up to 250 meters overcoming the 100m limit on Ethernet UTP cable. With this brand-new feature, the GS-4210-8HP2S provides an additional solution for 802.3af/at PoE distance extension, thus saving the cost of Ethernet cable installation.



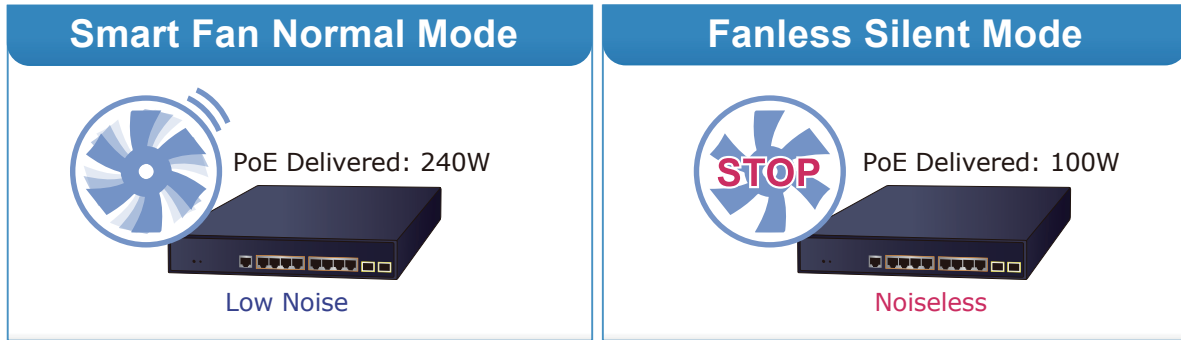
- Access control list
 - IPv4/IPv6 IP-based ACL
 - MAC-based ACL
- MAC security
 - Static MAC
 - MAC filtering
- Port security for source MAC address entries filtering
- DHCP snooping to filter distrusted DHCP messages
- Dynamic ARP Inspection discards ARP packets with invalid MAC address to IP address binding
- IP source guard prevents IP spoofing attacks
- DoS attack prevention
- SSH/SSL

Management

- IPv4 and IPv6 dual stack management
- Switch management interface
 - Web switch management
 - Telnet command line interface
 - SNMP v1 and v2c switch monitoring
 - SSHv2 and TLSv1.2 and SNMP v3 secure access
- SNMP Management
 - Four RMON groups (history, statistics, alarms and events)
 - SNMP trap for interface link up and link down notification
- User privilege levels control
- Built-in Trivial File Transfer Protocol (TFTP) client
- BOOTP and DHCP for IP address assignment
- System maintenance
 - Firmware upload/download via HTTP/TFTP
 - Configuration upload/download through web interface
 - Dual images
 - Hardware reset button for system reboot or reset to factory default
- SNTP Network Time Protocol
- Network Diagnostic
 - SFP-DDM (digital diagnostic monitor)
 - Cable diagnostics
 - ICMPv4/ICMPv6 remote ping
- Link Layer Discovery Protocol (LLDP) and LLDP-MED
- Event message logging to remote Syslog server
- PLANET smart discovery utility
- Smart fan with speed control

Environment-friendly, Smart Fan Design for Silent Operation

The GS-4210-8HP2S features a desktop-size metal housing, a low noise design and an effective ventilation system. It supports the smart fan technology that automatically controls the speed of the built-in fan to reduce noise and maintain the temperature of the PoE switch for optimal power output capability. The GS-4210-8HP2S is able to operate reliably, stably and quietly in any environment without affecting its performance.



Cybersecurity Network Solution to Minimize Security Risks

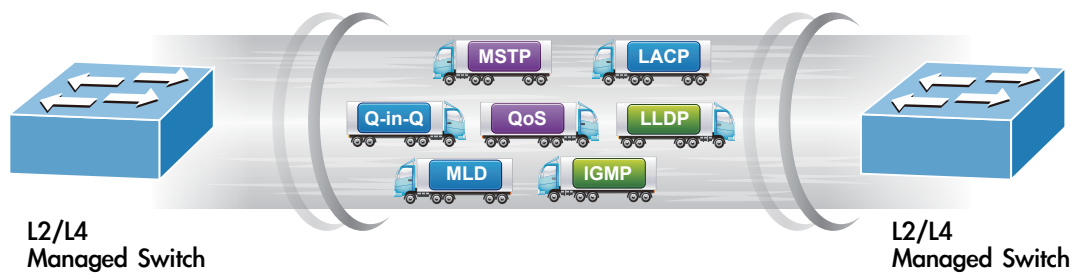
The cybersecurity feature that virtually needs no effort and cost to have includes the protection of the switch management and the enhanced security of the mission-critical network. Both SSHv2 and TLS protocols are utilized to provide strong protection against advanced threats.

IPv6/IPv4 Dual Stack Management

Supporting both IPv6 and IPv4 protocols, the GS-4210-8HP2S helps the SMBs to step in the IPv6 era with the lowest investment as its network facilities need not be replaced or overhauled if the IPv6 FTTx edge network is set up.

Robust Layer 2 Features

The GS-4210-8HP2S can be programmed for advanced switch management functions such as dynamic port link aggregation, 802.1Q VLAN and **Q-in-Q VLAN**, **Multiple Spanning Tree Protocol (MSTP)**, **loop and BPDU guard**, **IGMP snooping**, and **MLD snooping**. Via the link aggregation, the GS-4210-8HP2S allows the operation of a high-speed trunk to combine with multiple ports, and supports fail-over as well. Also, the **Link Layer Discovery Protocol (LLDP)** is the Layer 2 protocol included to help discover basic information about neighboring devices on the local broadcast domain.



Efficient Traffic Control

The GS-4210-8HP2S is loaded with robust QoS features and powerful traffic management to enhance services to business-class data, voice and video solutions. The functionality includes broadcast/multicast **storm control**, per port **bandwidth control**, IP DSCP QoS priority and remarking. It guarantees the best performance for VoIP and video stream transmission, and empowers the enterprises to take full advantage of the limited network resources.

Powerful Security

PLANET GS-4210-8HP2S offers comprehensive **IPv4/IPv6** Layer 2 to Layer 4 **Access Control List (ACL)** for enforcing security to the edge. It can be used to restrict network access by denying packets based on source and destination IP address, TCP/UDP ports or defined typical network applications. Its protection mechanism also comprises **802.1X port-based** user and device authentication, which can be deployed with RADIUS to ensure the port level security and block illegal users. With the **protected port** function, communication between edge ports can be prevented to guarantee user privacy. Furthermore, **Port security** function allows to limit the number of network devices on a given port.

Advanced Network Security

The GS-4210-8HP2S also provides **DHCP snooping**, **IP source guard** and **dynamic ARP inspection** functions to prevent IP snooping from attack and discard ARP packets with invalid MAC address. The network administrators can now construct highly-secure corporate networks with considerably less time and effort than before.

User-friendly and Secure Management

For efficient management, the GS-4210-8HP2S is equipped with **web**, **Telnet** and **SNMP** management interfaces. With the built-in web-based management interface, the GS-4210-8HP2S offers an easy-to-use, platform-independent management and configuration facility. By supporting the standard SNMP, the switch can be managed via any standard management software. For text-based management, the switch can be accessed via Telnet. Moreover, the GS-4210-8HP2S offers secure remote management by supporting **SSH**, **SSL** and **SNMP v3** connections which encrypt the packet content at each session.

Flexibility and Long-distance Extension Solution

The two mini-GBIC slots built in the GS-4210-8HP2S support SFP auto-detection and dual speed as it features **100BASE-FX** and **1000BASE-SX/LX SFP** (Small Form-factor Pluggable) fiber transceivers to uplink to backbone switch and monitoring center in long distance. The distance can be extended from 550 meters to 2 kilometers (multi-mode fiber) and up to above 10/20/40/80/120 kilometers (single-mode fiber or WDM fiber). They are well suited for applications within the enterprise data centers and distributions.

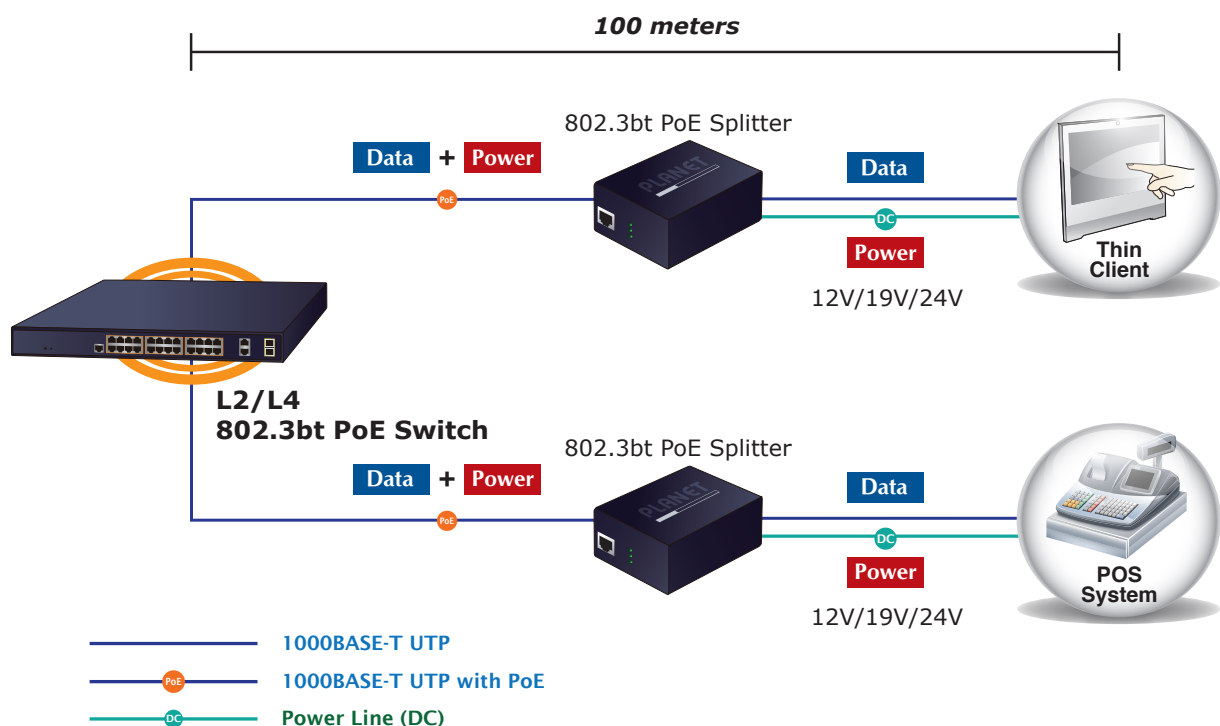
Intelligent SFP Diagnosis Mechanism

The GS-4210-8HP2S supports **SFP-DDM (Digital Diagnostic Monitor)** function that can easily monitor real-time parameters of the SFP for network administrator, such as optical output power, optical input power, temperature, laser bias current and transceiver supply voltage.

Applications

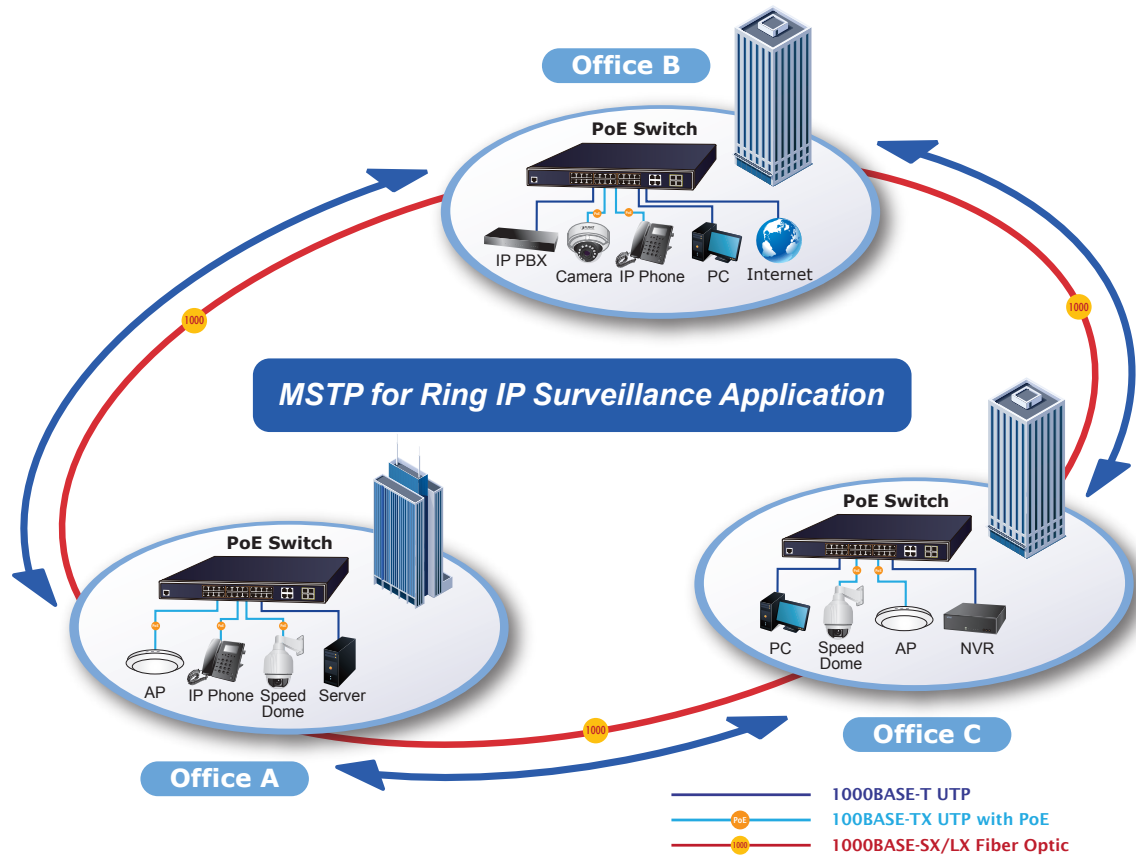
90W 802.3bt PoE++ and 30W 802.3at PoE+ Hybrid PoE Networking Solution

PLANET GS-4210-8HP2S can easily build an 802.3bt PoE++ networking solution on the cyber security system for the enterprises. For instance, it can work with the POS system and thin client to perform comprehensive security protection for today's businesses. The GS-4210-8HP2S and 802.3bt PoE++ Splitter - POE-173S, operate as a pair to provide the easiest way to power your non-PoE devices such as laptops, thin client, POS system, PTZ (pan, tilt & zoom) IP cameras and other network devices at distance up to 100 meters.



Multiple Spanning Tree Protocol with PoE IP Office Solution for SMBs and Workgroups

The GS-4210-8HP2S features strong, rapid self-recovery capability to prevent interruptions and external intrusions. It incorporates **Multiple Spanning Tree Protocol (802.1s MSTP)** into customer's automation network to enhance system reliability and uptime. Applying the IEEE 802.3af/at/bt standard, the GS-4210-8HP2S can directly connect with any IEEE 802.3at/bt end nodes like speed dome cameras. The GS-4210-8HP2S can easily help enterprises with the available network infrastructure to build wireless AP, IP camera and VoIP systems where power can be centrally controlled.



Specifications

Product	GS-4210-8HP2S
Hardware Specifications	
Copper Ports	8 x 10/100/1000BASE-T RJ45 auto-MDI/MDI-X port
SFP Slots	2 x 100/1000BASE-X SFP interface Supports 100/1000Mbps dual mode and DDM
PoE Injector Port	6 ports with 802.3at PoE+ injector function with port-1 to port-6 2 ports with 802.3bt PoE++ injector function with port-7 to port-8
Switch Architecture	Store-and-Forward
Switch Fabric	20Gbps/non-blocking
Switch Throughput@64Bytes	14.88Mpps
Address Table	8K entries
Shared Data Buffer	4.1 megabits
Flow Control	IEEE 802.3x pause frame for full duplex Back pressure for half duplex
Jumbo Frame	1K bytes
Reset Button	< 5 sec: System reboot > 5 sec: Factory default
LED Indicators	PWR, LNK/ACT, PoE-in-Use, LED Mode
Power Requirements	100~240V AC, 50/60Hz, auto-sensing
Dimensions (W x D x H)	280 x 229 x 44 mm, 1U height
ESD Protection	Contact Discharge 6KV DC Air Discharge 8KV DC
Enclosure	Metal
Weight	1920g
Power Consumption/Dissipation	280 watts (max.)/2013.2 BTU
Fan	1 x smart fan Supports fanless mode
Power over Ethernet	
PoE Standard	IEEE 802.3af/at PoE+ PSE (Port 1-6) IEEE 802.3bt PoE++ PSE (Port 7-8)
PoE Power Supply Type	End-span (Port 1-6) End-span/Mid-span/802.3bt/UPoE/Legacy (Port 7-8)
PoE Power Output	Port 1-6: Per PoE+ port 54V DC, max. 36 watts Port 7-8: <ul style="list-style-type: none"> ■ 802.3bt mode, maximum 90 watts ■ UPoE mode, maximum 95 watts ■ Force-mode, maximum 60 watts ■ End-span mode: maximum 36 watts ■ Mid-span mode: maximum 36 watts
Power Pin Assignment	End-span: 1/2 (-), 3/6 (+) Mid-span: 4/5 (+), 7/8 (-) 802.3bt/UPoE: 1/2 (-), 3/6 (+), 4/5 (+), 7/8 (-)
PoE Power Budget	240 watts with standard mode 100 watts with fanless mode
PoE Ability PD @ 12.5 watts	8 units with standard mode 8 units with fanless mode
PoE Ability PD @ 25 watts	8 units with standard mode 4 units with fanless mode
PoE Ability PD @ 51 watts	2 units with standard mode 1 units with fanless mode
PoE Ability PD @ 71 watts	2 units with standard mode 1 units with fanless mode
PoE Management Functions	
Active PoE Device Detection	Yes
PoE Power Recycle	Yes, daily or predefined schedule
PoE Schedule	4 schedule profiles
PoE Extend Mode	Yes, max. up to 250 meters

PoE Port Management	<ul style="list-style-type: none"> ■ Port Enable/Disable/Schedule ■ PoE mode control <ul style="list-style-type: none"> - 802.3bt - UPoE - 802.3at End-span - 802.3at Mid-span ■ Force mode ■ Port Priority
Layer 2 Functions	
Port Mirroring	<p>TX/RX/both Many-to-1 monitor Up to 4 sessions</p>
VLAN	<p>802.1Q tagged-based VLAN Up to 256 VLAN groups, out of 4094 VLAN IDs 802.1ad Q-in-Q tunneling Voice VLAN Protocol VLAN Private VLAN (Protected port) GVRP</p>
Link Aggregation	<p>IEEE 802.3ad LACP and static trunk Supports 2 groups of 2-port trunk</p>
Spanning Tree Protocol	<p>IEEE 802.1D Spanning Tree Protocol (STP) IEEE 802.1w Rapid Spanning Tree Protocol (RSTP) IEEE 802.1s Multiple Spanning Tree Protocol (MSTP) STP BPDU Guard, BPDU Filtering and BPDU Forwarding</p>
IGMP Snooping	<p>IGMP (v2/v3) snooping IGMP querier Up to 256 multicast groups</p>
MLD Snooping	<p>MLD (v1/v2) snooping, up to 256 multicast groups</p>
Access Control List	<p>IPv4/IPv6 IP-based ACL/MAC-based ACL</p>
QoS	<p>8 mapping IDs to 8 level priority queues - Port number - 802.1p priority - 802.1Q VLAN tag - DSCP field in IP packet Traffic classification based, strict priority and WRR</p>
Security	<p>IEEE 802.1X port-based authentication Built-in RADIUS client to cooperate with RADIUS server RADIUS/TACACS+ user access authentication IP-MAC port binding MAC filtering Static MAC address DHCP Snooping and DHCP Option82 STP BPDU guard, BPDU filtering and BPDU forwarding DoS attack prevention ARP inspection IP source guard</p>
Management Functions	
Basic Management Interfaces	<p>Web browser; Telnet; SNMP v1, v2c Firmware upgrade by HTTP/TFTP Protocol through Ethernet network Remote/Local syslog System log LLDP protocol SNTP</p>
Secure Management Interfaces	<p>SSHv1/v2, TLS v1.2, SNMP v3</p>
System Management	<p>Firmware upgrade by HTTP/TFTP protocol through Ethernet network Remote/Local Syslog System log LLDP protocol SNTP PLANET Smart Discovery Utility PLANET UNI-NMS central management software</p>

SNMP MIBs	<p>RFC 1213 MIB-II RFC 1215 Generic Traps RFC 1493 Bridge MIB RFC 2674 Bridge MIB Extensions RFC 2737 Entity MIB (v2) RFC 2819 RMON (1, 2, 3, 9) RFC 2863 Interface Group MIB RFC 3635 Ethernet-like MIB RFC 3621 Power Ethernet MIB</p>
Standards Conformance	
Regulatory Compliance	FCC Part 15 Class A, CE, LVD
Standards Compliance	<p>IEEE 802.3 10BASE-T IEEE 802.3u 100BASE-TX/100BASE-FX IEEE 802.3z Gigabit SX/LX IEEE 802.3ab Gigabit 1000T IEEE 802.3x flow control and back pressure IEEE 802.3ad port trunk with LACP IEEE 802.1D Spanning Tree Protocol IEEE 802.1w Rapid Spanning Tree Protocol IEEE 802.1s Multiple Spanning Tree Protocol IEEE 802.1p Class of Service IEEE 802.1Q VLAN tagging IEEE 802.1x Port Authentication Network Control IEEE 802.1ab LLDP IEEE 802.3af Power over Ethernet IEEE 802.3at Power over Ethernet Plus IEEE 802.3bt Power over Ethernet Plus Plus IEEE 802.3az Energy Efficient Ethernet (EEE) RFC 768 UDP RFC 793 TFTP RFC 791 IP RFC 792 ICMP RFC 2068 HTTP RFC 1112 IGMP v1 RFC 2236 IGMP v2 RFC 3376 IGMP v3 RFC 2710 MLD v1 RFC 3810 MLD v2</p>
Environment	
Operating Temperature	<p>0 ~ 40 degrees C (Fanless mode enabled) 0 ~ 50 degrees C (Default)</p>
Storage Temperature	-20 ~ 70 degrees C
Humidity	5 ~ 95% (non-condensing)
Standard Accessories	
Packet Contents	<p>Managed Switch x 1 QIG x 1 RS232 to RJ45 Console Cable x 1 Rubber Feet x 4 Rack-mounting Package x 1 Power Cord x 1 SFP Dust Caps x 2</p>

Ordering Information

GS-4210-8HP2S	2-Port 10/100/1000T 802.3bt PoE + 6-Port 10/100/1000T 802.3at PoE + 2-Port 100/1000X SFP Managed Switch
---------------	---

Related Products

GS-4210-24HP2C	4-Port 10/100/1000T 802.3bt PoE + 20-Port 10/100/1000T 802.3at PoE + 2-Port Gigabit TP/SFP Combo Managed Switch
GS-4210-24UP4C	24-Port 10/100/1000T 802.3bt PoE++ plus 4-Port Gigabit TP/SFP Combo Managed Switch
GS-5220-8UP2T2X	Layer 3 8-Port 10/100/1000T 802.3bt PoE + 2-Port 10/100/1000T + 2-Port 10G SFP+ Managed Switch
GSD-504UP	2-Port 10/100/1000T 802.3bt PoE + 2-Port 10/100/1000T 802.3at PoE + 1-Port Gigabit Desktop Switch (External 120 Watts)
POE-173S	Single-Port 10/100/1000Mbps 802.3bt PoE++ Splitter

Available Modules

MGB-GT	SFP-Port 1000BASE-T Module
MGB-SX	SFP-Port 1000BASE-SX mini-GBIC module - 220/550m
MGB-LX	SFP-Port 1000BASE-LX mini-GBIC module - 10km
MGB-L30	SFP-Port 1000BASE-LX mini-GBIC module - 30km
MGB-L50	SFP-Port 1000BASE-LX mini-GBIC module - 50km
MGB-L70	SFP-Port 1000BASE-LX mini-GBIC module - 70km
MGB-L120	SFP-Port 1000BASE-LX mini-GBIC module - 120km
MGB-LA10	SFP-Port 1000BASE-LX (WDM,TX:1310nm) mini-GBIC module - 10km
MGB-LB10	SFP-Port 1000BASE-LX (WDM,TX:1550nm) mini-GBIC module - 10km
MGB-LA20	SFP-Port 1000BASE-LX (WDM,TX:1310nm) mini-GBIC module - 20km
MGB-LB20	SFP-Port 1000BASE-LX (WDM,TX:1550nm) mini-GBIC module - 20km
MGB-LA40	SFP-Port 1000BASE-LX (WDM,TX:1310nm) mini-GBIC module - 40km
MGB-LB40	SFP-Port 1000BASE-LX (WDM,TX:1550nm) mini-GBIC module - 40km

Available 100Mbps Modules

MFB-FX	SFP-Port 100BASE-FX Transceiver (1310nm) - 2km
MFB-F20	SFP-Port 100BASE-FX Transceiver (1310nm) - 20km
MFB-F40	SFP-Port 100BASE-FX Transceiver (1310nm) - 40km
MFB-F60	SFP-Port 100BASE-FX Transceiver (1310nm) - 60km
MFB-FA20	SFP-Port 100BASE-BX Transceiver (WDM,TX:1310nm) - 20km
MFB-FB20	SFP-Port 100BASE-BX Transceiver (WDM,TX:1550nm) - 20km