



Datasheet

Parking Management



Version 3.6

This Specification Sheet gives the details of system requirements, feature details and other salient points of AllGoVision's Parking Management Feature.

Revision Date: May, 2015

AllGo Embedded Systems Pvt. Ltd.

2729, 80 Feet Road, HAL 3rd Stage
Indira Nagar, Bangalore-560038, India

Telephone: +91-80-4330-3100
Email: agv_contact@allgosystems.com
Website: www.allgovision.com

Contents

COPYRIGHT INFORMATION	2
INTRODUCTION	3
SYSTEM REQUIREMENT	3
FEATURE DESCRIPTION	4
Technical Specification:	4
Camera requirements:.....	4
INTEGRATION.....	5
Architecture.....	5
ALLGOVISION GUI.....	6

COPYRIGHT INFORMATION

© 2015-2016 AllGo Embedded Systems Private Limited, Bangalore, India. All Rights Reserved.

All information contained in this document is the property of AllGo Embedded Systems Private Limited., It is not to be disclosed by the recipients to third parties, neither allowed to be reproduced by or for third parties in any form or by any means, electronic nor mechanical, including photocopying, without prior written permission from AllGo Embedded Systems Private Limited.

INTRODUCTION

This Data sheet gives the details of system requirements, feature details of AllGoVision's Parking Management feature.

The Video Analytics product can provide the free slots available for parking in parking place of buildings, shopping malls etc.

SYSTEM REQUIREMENT

AllGoVision analytics has the following system hardware and software requirements.

CATEGORY	REQUIREMENT
Operating System	Windows Server 2003, 2008, 2012 Window XP, Vista, 7, 8
CPU	Intel i7, RAM 16 GB for 20 channels Intel 12 Core Xeon, RAM 32 GB for 60 channels
Network	Ethernet, 100 Mbit or higher recommended
Hard Disk Space	50 GB for 1 week storage of alarm files (images & videos)
Database	MySQL 5.5.2
Resolution and Frame Rate	320x240 and above up to 1080p Frame rate: 10 fps and above
Stand Alone version camera support	Models from Axis, Pelco, Bosch, Sony, Honeywell, Arecont Vision, IQInvision, Brickcom, Hikvision, Panasonic, ISD, Acti, Vision and others.
VMS Support	Milestone, Genetec, Indigovision, Exacqvision Note: Any other VMS is supported through Alarm Center

FEATURE DESCRIPTION

AllGoVision provides parking management to detect free slots available for parking

Technical Specification:

- Create any camera as entry and exit camera.
- Combine multiple cameras as one group.
- Provides occupancy and available slots based on the number of vehicles entered and exited.
- Multiple groups can be formed.

Camera requirements:

- Fixed camera mount.
- Minimum capture rate of 20 fps.
- Installation angular at a height of 3m-10m



INTEGRATION

AllGoVision Parking Management application is available in 2 flavours:

With VMS:

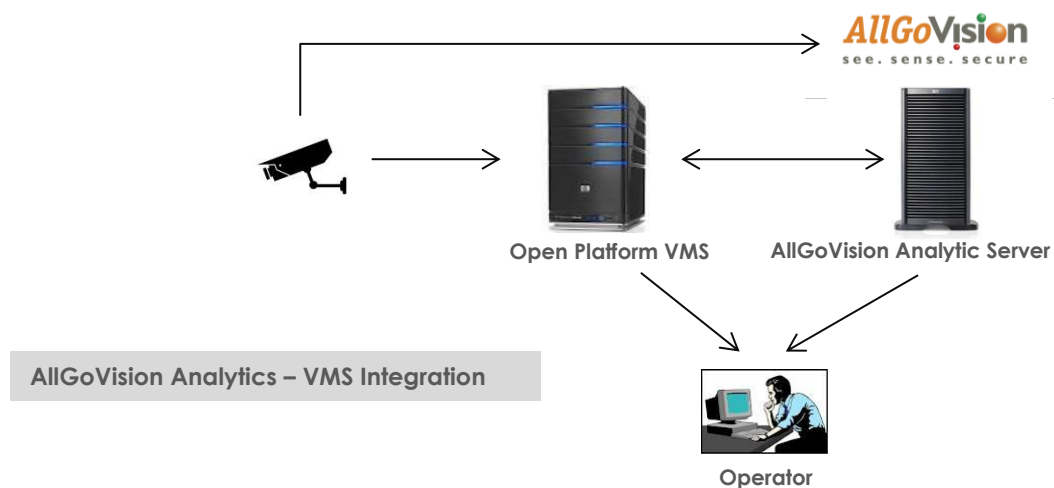
- AllGoVision application is based on Open Platform Standards.
- It is integrated with VMS like Milestone, Genetec.

Without VMS:

- It is a standalone application.
- It works independent of VMS.
- Directly takes the video feed from camera.

Architecture

A simple architecture with VMS is shown below. The video from the CCTV camera is stitched by AllGoVision video analytics server. The alarms can be viewed in the viewer. The occupancy levels are shown in Alarm Center.



ALLGOVISION GUI

AllGoVision product offers a graphical user interface with windows-oriented, tab based, point and pick interface. Extensive use of graphical icons, pull-down menus, buttons, check boxes, and radio-buttons are incorporated to reduce typing work to the minimum possible extent.

AllGoVision product GUI consists of following seven tabs:

Server Setup Tab

The server setup tab consists of VMS or camera settings and other field details. You are able to view the video details from camera.

Analytics Setup Tab

The Analytics setup tab gives options to set the analytics fields for different features.

Advanced Setup Tab

This tab gives options to select advanced settings like camera environment, analytics processing complexity, shadow removal sensitivity, camera view, predefined object size and minimum object size.

Video Stitching Tab

This allows stitching of Videos from 2-8 cameras. The output is displayed in the same tab. The objects detected are also shown with Red rectangles.

Trigger Based

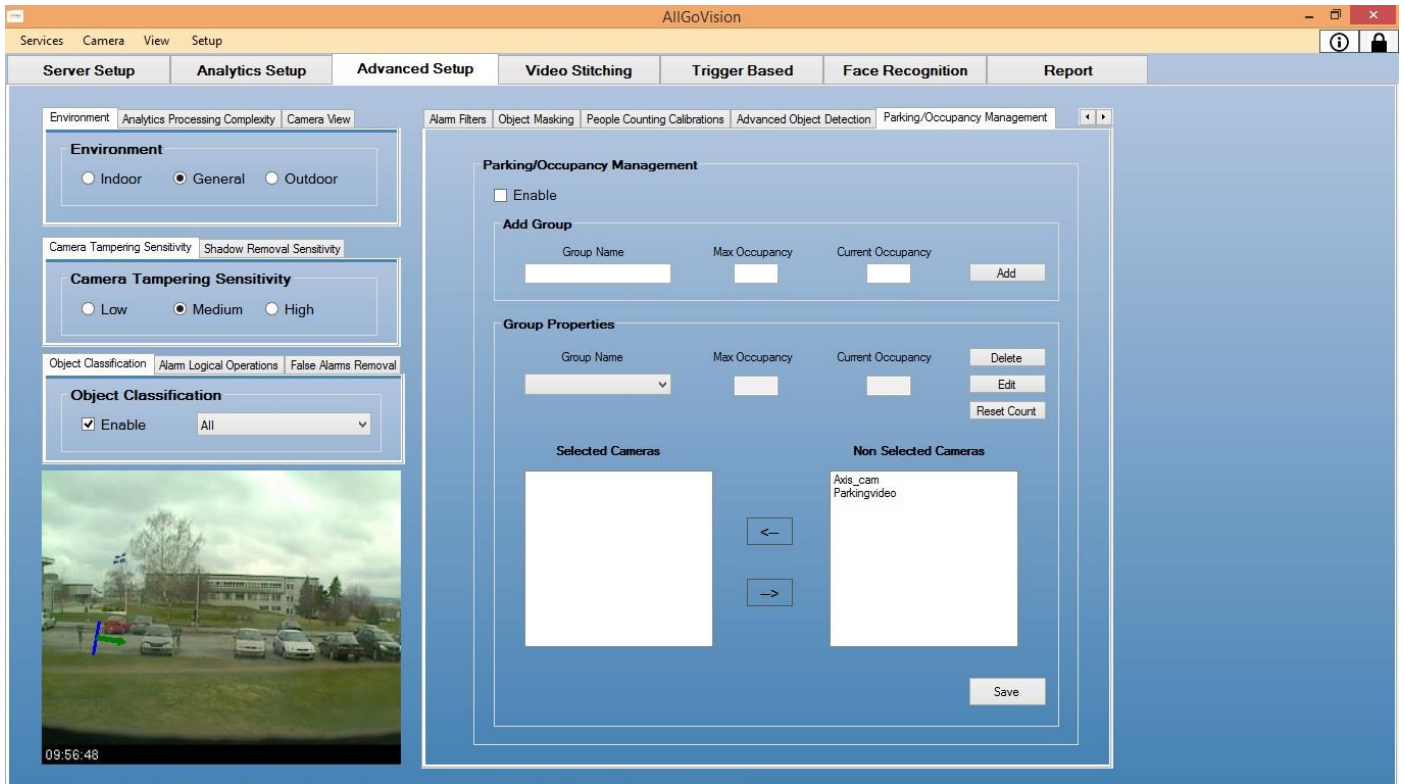
This allows running analytics from trigger like that from RFID.

Face Recognition Tab

This tab provides registration application for Face recognition.

Report Tab

This tab gives option to plot the statistics of people counting. Both line and bar charts are possible. This also has auto e-mailer and export of plots and report.



AllGoVision Parking Management



Parking Availability in Alarm Center