



**iVMS-4500(Android)**  
**Mobile Client Software**  
**Technical Specification**

## Software Information

Name: iVMS-4500 mobile client software

Version: V3.0.0

Operating environment: Mobile phone with Android system

System requirements: Android 2.2 or higher version

## Introduction

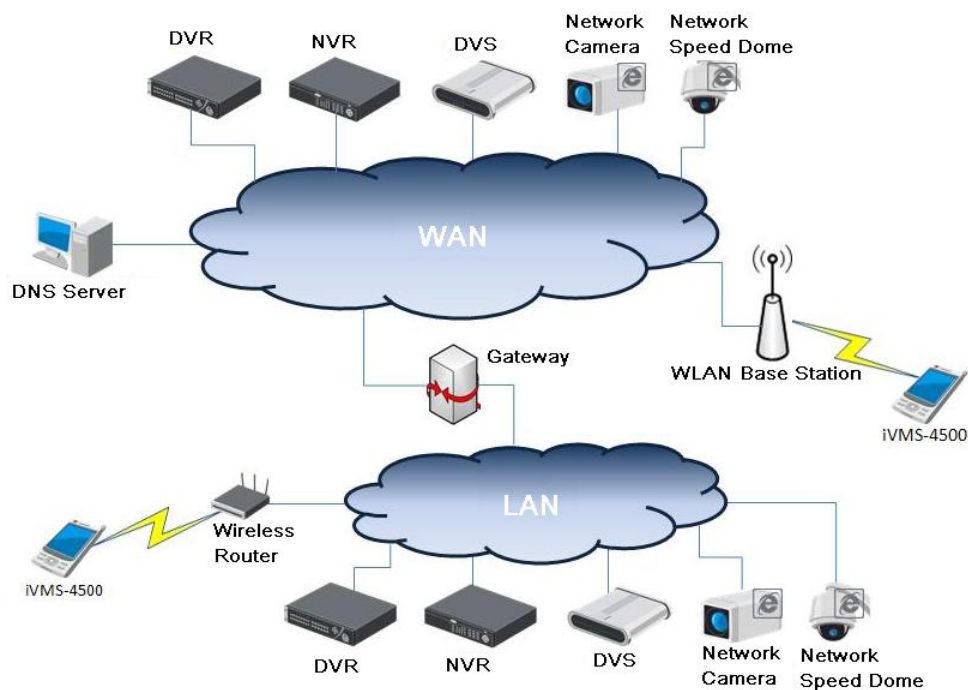
iVMS-4500 V3.0 mobile client software, which is designed for mobile phone on the basis of Android (Version 2.2 or higher), can be used to remotely monitor the live video from embedded DVR, NVR, network camera, network speed dome and DVS via Wi-Fi, 2G or 3G, play back record files, control alarm output, realize PTZ control and configure parameters, etc.

## Main Features

- Quick live view of multiple cameras;
- Support live view by page and switch pages via gesture;
- Support PTZ control via gesture;
- Image quality configurable during live view mode;
- Remotely play back record files and accurately position the playback time via time line;
- Max. 100 devices can be managed;
- Support password protection;
- Check new version automatically;
- Display the quick operation guide and main features of the software.

## Applications

Network topological diagram:



## Functional Specifications

Live View	<ul style="list-style-type: none"> <li>➤ 1/4-window division live view</li> <li>➤ Live view by page (max. 16 pages for 1-window live view and max. 4 pages for 4-window live view)</li> <li>➤ Live view with audio</li> <li>➤ Capture during live view</li> <li>➤ Full-screen live view (in horizontal screen mode)</li> <li>➤ Collect live view cameras into favorites</li> <li>➤ Image quality configurable: clear, balanced, fluent and custom</li> <li>➤ Two-way audio</li> <li>➤ Enable/disable alarm output</li> <li>➤ Live view of channel-zero</li> </ul>
PTZ Control	<ul style="list-style-type: none"> <li>➤ Control PTZ via gesture</li> <li>➤ Auto-scan</li> <li>➤ Zoom, focus and iris control</li> <li>➤ Preset setting and calling</li> </ul>
Remote Playback	<ul style="list-style-type: none"> <li>➤ Play back record files by time</li> <li>➤ Playback with audio</li> <li>➤ Capture during playback</li> <li>➤ Full-screen playback (in horizontal screen mode)</li> <li>➤ Accurately position the playback time via time line</li> </ul>
Device Management	<ul style="list-style-type: none"> <li>➤ Add, delete or modify device, and view device information</li> <li>➤ Add device via HiDDNS, IP/Domain, or IP Server mode</li> <li>➤ Automatically obtain the camera information of the device</li> </ul>
System Configuration	<ul style="list-style-type: none"> <li>➤ Password protection</li> <li>➤ Check new version automatically</li> <li>➤ Show the new features</li> <li>➤ Display the quick operation guide</li> </ul>

## Hardware Requirements

CPU	Single-core 1 GHz or higher
Memory	512M or higher
Resolution	480*800, 480*854, 960*640, 1280*720, 1280*800, 1024*600

## Technical Specifications

Module	Item	Parameters
Client	Max. connectable devices	100
	Max. cameras for synchronized live view	4
	Max. cameras for synchronized playback	1
	Max. favorites	32
	Video and audio live view	Support
	Max. live view resolution	1080P
	Compatible devices	All encoding devices of Hikvision

## Recommended Configuration

Mobile phone model: Samsung I9100 Galaxy SII (CPU: dual-core 1.2 GHz, Memory: 1G)

Video compression: H.264

Network environment: Wi-Fi/3G, 1024Kbps or higher

Resolution	1-ch	2-ch	3-ch	4-ch	Recommended Configuration
HD1080P	√				Frame rate: 4fps; Bitrate: 1024Kbps
UXGA	√				Frame rate: 6fps; Bitrate: 1024Kbps
XVGA	√				Frame rate: 10fps; Bitrate: 1024Kbps
HD720P	√				Frame rate: 15fps; Bitrate: 1024Kbps
4CIF	√	√			Frame rate: 25fps; Bitrate: 1024Kbps
VGA	√	√			Frame rate: 25fps; Bitrate: 512Kbps
CIF	√	√	√	√	Frame rate: 25fps; Bitrate: 256Kbps
QVGA	√	√	√	√	Frame rate: 25fps; Bitrate: 128Kbps
QCIF	√	√	√	√	Frame rate: 25fps; Bitrate: 128Kbps

**Note:** The above mentioned parameters are for your reference only. Please configure the parameters according to actual environment.